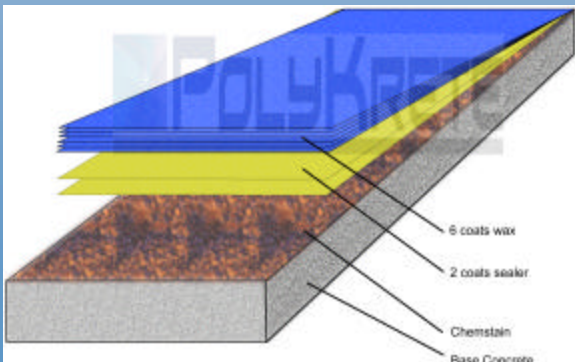
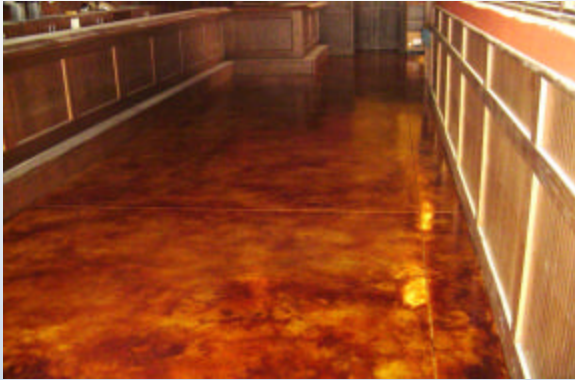


Acid and Chemical Staining:  
 is not a typical stain or dye. Unlike opaque sealers that produce an even color, Acid Stain produces the multi-hued, variegated, mottled look of natural stone. Acid Stain may be used in interior and exterior flooring applications. Typical applications include basements, garages, restaurants, malls, etc.



## COMMERCIAL



Serving the DC Metro and Central Virginia communities

**703.652.9206**

[www.polykrete.com](http://www.polykrete.com)

[www.myspace.com/polykrete](http://www.myspace.com/polykrete)



## RESIDENTIAL



## Decorative Concrete Resurfacing



**Don't re-pour it...  
 Restore it!!!**

**703.652.9206**

PolyKrete, Inc is a locally owned, licensed, insured and certified concrete resurfacing company. We are setting new standards in the concrete and flooring industries with our line of cement polymer products for concrete restoration, and architectural resurfacing. Our systems have flexural, tensile, adhesive, and compressive strengths well in excess of normal concrete. All of PolyKrete's systems link steadfastly to your existing concrete and are warranted to provide years of lasting use, protection, and beauty.



Acid stained concrete

## CONCRETE RESURFACING

### WHY IT WORKS

As many people know, traditional concrete does not bond well to existing concrete. Polykrete is not concrete; it is POLYMER CEMENT. There are two major components to create a good bond between existing concrete and a cementitious overlay. First we have to prepare the underlying surface which includes: chasing and filling cracks, removal of loose or weak concrete, acid etching and neutralizing, high-psi power-washing and flash-patching. This step is called surface prep and is designed to completely expose the pores on your concrete surface. This can easily take a full day to complete. The second component is a chemical additive in our cement product called polymer. It can be compared to exceptionally hard superglue but is more industrial and specifically designed to seep into concrete pores creating both a chemical and physical bond to your concrete.

## POLYKRETE RESURFACING PRODUCTS

**Stamped Overlay:** 3/8" polymer modified and fiber reinforced cement. Typical applications include basements, foyers, drive-ways, sidewalks, pool decks, basements. Can be made to look like virtually any naturally occurring stone.



**Spraytexture:** is a trowelable or hopper gun (compressed air) applied cementitious topping for texturing both interior and exterior concrete surfaces and can be used with stencils. Typical areas include pool decks, patios, walkways, drive-ways, and parking lots. The spray applied finish coat provides excellent slip resistance. The finished product is extremely hard and durable.

